



Kettle

User Manual



KL 9221 I

EN



01M-8912481100-1422-01

1 Important safety and environmental instructions

This section contains safety instructions to prevent hazards that can result in injury or property damage.

Any warranty is void if these instructions are not followed.

1.1 General safety

- This appliance complies with international safety standards.
- Appliance may be used by children above age of 8, persons with limited physical, perceptual or mental abilities or persons with a lack of experience and knowledge if they are supervised or given instructions on the operation of the appliance and any relevant risks they may encounter.
- Keep the appliance and its cable out of reach of children age 8 and under.

1 Important safety and environmental instructions

- Children should not tamper with the appliance. Cleaning and user maintenance should not be done by children over 8 years of age unless they are under the supervision of adults.
- Cleaning and user maintenance should not be carried out by unattended children.
- Do not use the appliance if the power cord or the appliance is damaged. Contact authorised service.
- This appliance is not designed for commercial use. This appliance is only intended for use in household and similar applications such as the places specified below:
 - In personnel kitchen areas in shops, offices and other working areas,
 - Farm houses,
 - Areas used by customers in motels and hotels, and other residential settings,
 - Bedrooms and breakfast locations.

1 Important safety and environmental instructions

- This appliance is intended for boiling water only. Do not use to boil liquids other than water not to cause a dangerous situation.
- Do not touch without ensuring that the surfaces of the appliance and the heating plate are cooled down.
- Your mains power supply should be in align with the specified information on the type tag of the appliance.
- The appliance should be supplied through a residual current device (RCD) whose rated residual operating current does not exceed 30 mA.
- Use the appliance in a grounding plug.
- Do not use the appliance with an extension cord.
- To prevent damage to the power cord, prevent it from being pinched, crimped or rubbed against sharp edges.

1 Important safety and environmental instructions

- Do not touch the plug of the appliance with damp or wet hands while the appliance is plugged in.
- Do not pull on the cord while unplugging the appliance.
- Do not fill up the appliance above maximum level mark. Boiling water may splash around.
- Do not fill the appliance below the minimum line.
- Do not remove the appliance's lid while the water is boiling.
- Hold the appliance by its handle only.
- Do not operate the appliance without water inside.
- Fill the appliance with water by removing it from the base unit.
- Protect the base connector of the appliance against splashing water/fluid. Ensure that the base connector of the appliance is

1 Important safety and environmental instructions

always dry and clean.

- Use the appliance with the supplied base unit only.
- Use and store the appliance on a flat and secured surface.
- Do not disassemble the appliance.
- Use only original parts or parts recommended by the manufacturer.
- Before cleaning the appliance, unplug it and dry it completely after cleaning.
- Do not immerse the appliance or its power cord in water.
- Do not use the appliance in or near explosive or flammable environments and substances.
- If you keep the packaging materials, keep them out of the reach of children.
- **WARNING:** To prevent a hazard caused when the thermal breaker is brought to the start position inadvertently, do not supply

1 Important safety and environmental instructions

power to this appliance with an external switching mechanism such as a timer or do not connect it to a circuit that is switched on and off regularly by an auxiliary program.

1.2 Compliance with the WEEE regulations and waste disposal



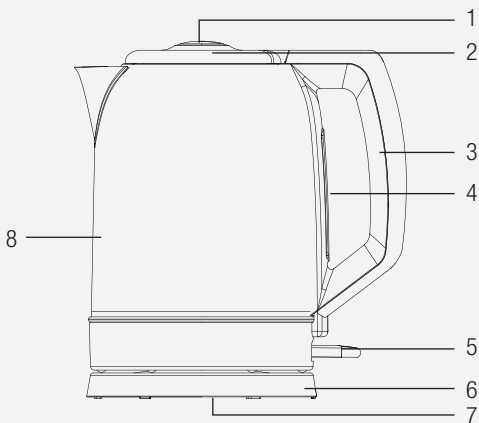
This appliance does not contain the dangerous and prohibited materials indicated in the “Regulation on The Control of Waste Electrical and Electronic Equipment” published by Ministry of Environment and Urbanisation of Republic of Turkey. complies with WEEE Regulations. This product was manufactured from recyclable and reusable high quality parts and materials. Therefore, do not dispose of this product with other domestic wastes at the end of its life cycle. Take it to a collection point for recycling of electrical and electronic equipment. You can ask your local administration about these collection points. You can help protect the environment and natural resources by delivering the used products for recycling. Before disposing of the product, cut the power cord and break the lock on the door, if any, for children's safety.

1.3 Packaging information



The product's packaging is made of recyclable materials, in accordance with the National Legislation. Do not dispose of the packaging waste with the household waste or other wastes, dispose it to the packaging collection areas specified by local authorities.

2 Your kettle



1. Lid release switch
2. Lid
3. Handle
4. Water level indicator
5. On / Off switch
6. Base unit
7. Cable wrap (under the product)
8. Body

Technical data

Voltage : 220-240V~ 50-60Hz

Power consumption: 1850 - 2200 W

The rights to make technical and design changes are reserved.

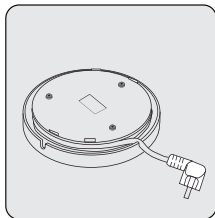
The values provided with the appliance or its accompanying documents are laboratory readings in accordance with the respective standards. These values may differ depending on the use and ambient conditions.

3 Operation

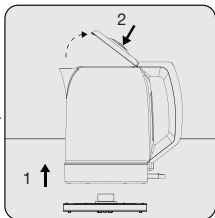
3.1 First operation

- Rinse out the appliance, fill it with water till its max. line and boil the water (see 2.2).
- Pour the hot water and rinse out the appliance.

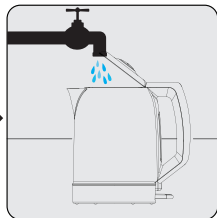
3.2 Boiling the Water



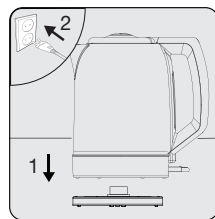
Remove the cable from the cable wrap (7) located under the base unit (6).



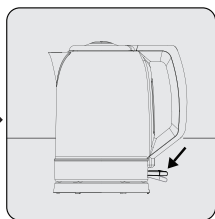
Detach the appliance from its base unit (6) and press the lid release switch (1).
- The lid will open.



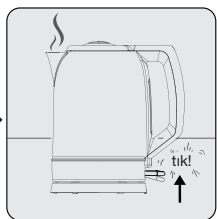
Fill the appliance with water between its min. and max. lines (4) and close its lid.



Deploy the appliance on the base unit (6) again. Plug in the appliance.



Push the on / off switch (5) down slightly.



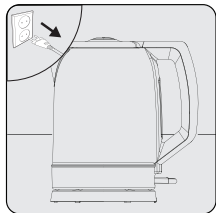
The on/off switch (5) will randomly shut off when the water boils.
– And the water is ready for use.

4 Cleaning and maintenance

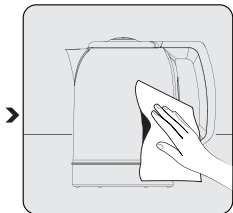
4.1 Cleaning



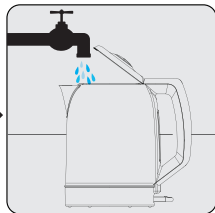
WARNING: Do not use benzene, solvents, abrasive cleaners, metal objects or hard brushes to clean the appliance.



Turn the appliance off and unplug it. Wait for the appliance to completely cool down.



Clean the outer surface of the appliance with a damp cloth and a little washing liquid.



Clean the water reservoir of the appliance by rinsing out it.



If there is still limescale remaining, repeat this process.



You can also use a descaler that is suitable for kettles. If you are using a descaler, please follow the instructions for this descaler.

4 Cleaning and maintenance

4.1.1 Descaling the kettle

Descaling the kettle will extend its life. The descaling process depends on water hardness in your region.

1. Fill the appliance with water till its maximum level and boil the water.
2. After turning the appliance off, unplug it.
3. Pour 2 cups of white vinegar or 1 tablespoon of citric acid into the boiled water.
4. Keep the solution inside the appliance for a few hours.
5. Then pour it and rinse out the appliance thoroughly.
6. Fill the appliance with clean water and boil it.
7. Empty the appliance.



WARNING: If you do not descale the kettle after using it for a long time, limescale completely covers the bottom of the water reservoir and the appliance becomes inoperable. In this case, it should be repaired by a service centre.



WARNING: No warranty claims are accepted for damage caused by improper handling.

4.2 Storage

- If you do not intend to use the appliance for a long time, store it carefully.
- Unplug the appliance and wait for it to cool down before storing.
- Store the appliance and its accessories in their original packaging.
- Store the appliance in a cool and dry environment.
- Always ensure that the appliance is kept out of reach of children.

4 Cleaning and maintenance

4.3 Transportation and shipping

- During transportation and shipping, carry the appliance with its original packaging. The packaging of the appliance will protect the appliance against physical damage.
- Do not place heavy objects on the appliance or the package. The appliance may get damaged.
- If the appliance is dropped, the appliance may not operate or permanent damage may occur.

4.4 Idling protection

If you try to run the appliance below the “min.” line located on the water level indicator (4) or without water, the idling protection will be activated and turn the appliance off. In this case, wait for the appliance to cool down before refilling with water to run it again.

4.5 What to do for energy saving

Turn off and unplug the appliance after each use.